



# Whitehouse Primary School

## Reception Spring 2026

### Newsletter



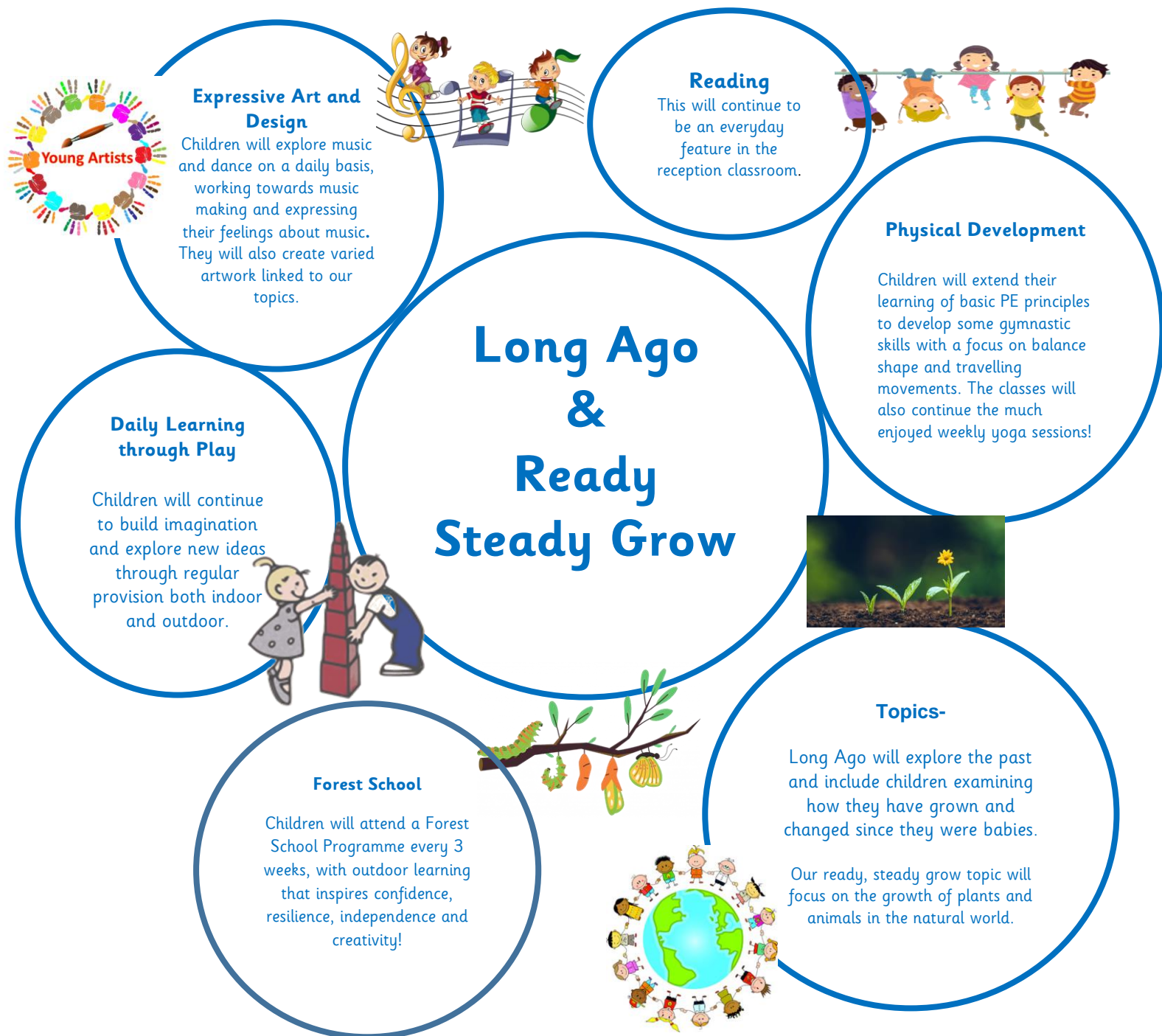
#### Reception Staff

Mrs Lowery (RSL Teacher)

Miss Murray (REM Teacher)

Mrs Nouri/Mrs Binks/Mrs Duley (TA Support)

As we move through the Spring term, we wanted to share some of the curriculum offering for Reception pupils. We are confident that the topics and ideas will both educate and ignite the children's' interests and imaginations. Here is just a flavour of the term ahead...



#### Key Times and Days

EYFS doors open - 8:40am  
Registration - 8:55am  
End of school - 3:15pm

PE - All Reception Wednesday am  
Forest School - Thursday am (every 3 weeks)



### Power Maths

Unit 7: Numbers to 10  
Unit 8: Comparing numbers to 10  
Unit 9: Addition to 10  
Unit 10: Measurement  
Unit 11: Number bonds to 10  
Unit 12: Subtraction  
Unit 13: Exploring patterns

### Communication and Language

Through daily oracy sessions, children will focus on building their speaking confidence and sharing their ideas using full sentences.

### Stay and Play-

This will be an opportunity for parents/ carers to come and spend an afternoon in school to see what happens in the classroom.

### PSHE

This term will focus on managing self, exploring emotions and making healthy choices.



### Phonics

Children will continue their important reading and writing journey through daily phonics sessions using the 'Little Wandle' Phonics Scheme.



### Homework

This will continue to be sent home on a Thursday. Tasks may include Little Wandle phase 3 sound practice, reading, letter/ number formation practice or a maths task.

### Drawing Club

Regular lessons use books and animations to engage children's imaginations through drawing. This develops to combine early writing skills.



### Important dates for Spring Term 2026

EYFS Festival at Durham University- Wednesday 21<sup>st</sup> January

Sibling and family photos- Tuesday 3<sup>rd</sup> February

Half Term- Monday 23<sup>rd</sup> February- Sunday 1<sup>st</sup> March

Stay and Play- WC Monday 2<sup>nd</sup> February

Parent learning Reviews- Wednesday 25<sup>th</sup> March and Thursday 26<sup>th</sup> March

End of Spring Term- Friday 11<sup>th</sup> April